

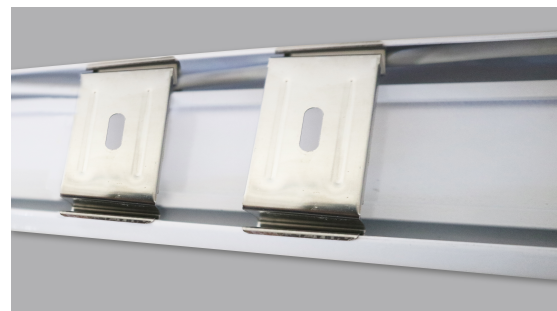


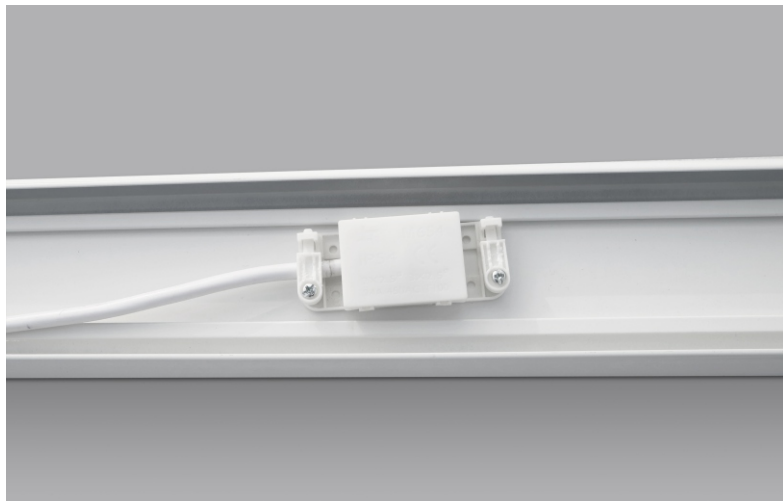
A-UNIQUE

ASIA UNIQUE LED LIGHTING CO., LTD

LED Slimline Batten

**AU06-BAT
Series**





General Features:

- Slimline batten with sensor is integration of microwave motion sensor and daylight sensor
- Convenient and easy installation
- PA14/play and plug terminal optional
- Even light output, no dark area
- Sealed LED diffuser, insect and dust proof
- Flicker free built-in driver
- Surface mount or suspended mount
- CE RoHS SAA C-tick approved
- 3 years warranty

Technical Specifications


Model No.	AU06-BAT09W2FXX	AU06-BAT20W2FXX	AU06-BAT30W4FXX	AU06-BAT36W4FXX	AU06-BAT36W5FXX	AU06-BAT50W5FXX	AU06-BAT50W6FXX
Dimension(mm)	600*80*43	600*80*43	1200*80*43	1200*80*43	1500*80*43	1500*80*43	1800*80*43
Cutout(mm)	/	/	/	/	/	/	/
Wattage(w)	9W	20W	30W	36W	36W	50W	50W
Input Voltage(v)	AC220~240V						
Light Source	SMD2835						
SDCM	<6						
CCT(K)	2700K/3000K/4000K/5000K/5700K/6500K						
Luminous Flux (lm)±5%	855-945	1900-2100	2850-3150	3420-3780	3420-3780	4750-5250	4750-5250
CRI	>80Ra						
Beam Angle(°)	120°						
Dimming option	Available						
Sensor option	Available						
Emergency Kits	Not Available						
Protection Class	Class I						
Degree of protection(IP)	IP20						
Impact Resistance(IK)	IK08						
Material	Base	Aluminum					
	Heatsink	Aluminum					
	Diffuser	PC					
L70	>54000Hrs						
Glow Wire Test(℃)	650℃						
Operation Temp.(℃)	-20~ 45℃						
Installation	Surface Mounted / Suspended						
Certificates	CE, Rohs, SAA & C-tick						
Warranty	3 Years						

Packing information

Model Number	Weight/Luminaire (kg)	QTY/BOX (pcs)	Inner Box Size (mm)	Weight/Box (kg)	QTY/CTN (pcs)	Carton Size (cm)	Weight/CTN (kg)	QTY/20GP (PCS)	QTY/40GP (PCS)	QTY/40HQ (PCS)
AU06-BAT09W2FXX	0.6	1	640*85*47	0.72	9	65*27*16	6.5	10604	24684	27590
AU06-BAT20W2FXX	0.6	1	640*85*47	0.72	9	65*27*16	6.5	10604	24684	27590
AU06-BAT30W4FXX	1.15	1	1240*85*47	1.28	9	125*27*16	11.6	5514	12836	14347
AU06-BAT36W4FXX	1.15	1	1240*85*47	1.28	9	125*27*16	11.6	5514	12836	14347
AU06-BAT36W5FXX	1.46	1	1540*85*47	1.57	9	155*27*16	14.2	4447	10351	11570
AU06-BAT50W5FXX	1.46	1	1540*85*47	1.57	9	155*27*16	14.2	4447	10351	11570
AU06-BAT50W6FXX	1.77	1	1840*85*47	1.86	9	185*27*16	16.8	3726	8673	9694


Sensor Setting

By selecting the combination on the DIP switches, sensor data can be precisely set for each specific application.

		1	2	
	I	ON	ON	100%
	II	-	ON	75%
	III	ON	-	50%
	IV	-	-	25%


Detection area

Detection area can be reduced by selecting the combination on the DIP switches to fit precisely each application .

		3	4	
	I	ON	ON	5s
	II	-	ON	90s
	III	ON	-	3min
	IV	-	-	10min

Hold time

Refers to the time period the lamp remains at 100% illumination after no motion detected.

		5	6	
	I	ON	ON	+∞
	II	-	ON	50Lux
	III	ON	-	15Lux
	IV	-	-	5Lux

Daylight sensor

The sensor can be set to only allow the lamp to illuminate below a defined ambient brightness threshold.

When set to Disable mode, the daylight sensor will switch on the lamp when motion is detected regardless of ambient light level.

50lux: twilight operation, 15lux, 5lux: darkness operation only.

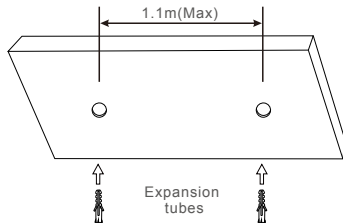
Note that daylight sensor is active only when lamp totally switches off.

Installation Instructions

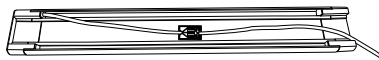
Surface Mounted

A. Drill 2 proper holes at the ceiling.

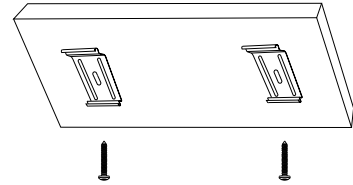
Gently knock the provided plastic expansion tubes provided into the pre-drilled holes, ensuring the plastic tubes are flush with the mounting surface.



C. Open the back terminal cover plate of the termination box to find the connection terminal and interconnect mains power supply cables with the connection terminal. Make sure that all connections are secure and properly tightened.

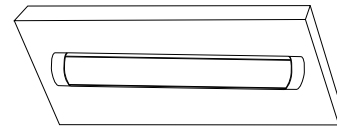


B. Take the flush mounting clips and line up the fixing holes to the pre-drilled location holes on your mounting surface. Fix both flush mounting clips using the screws provided.



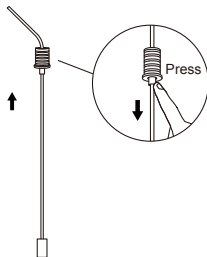
D. Clip the slim LED batten onto the flush mounted clips.

NOTE: Ensure installation is correct before switching on the fitting to test.

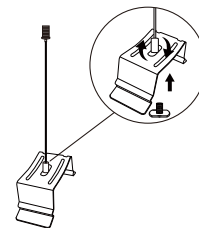


Suspended Mounted

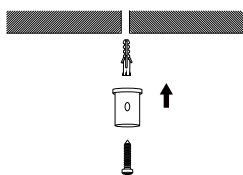
Step1: Insert the ropes to the clips and adjust the length.



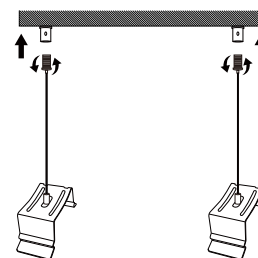
Step2: Insert the ropes into the screw nuts.



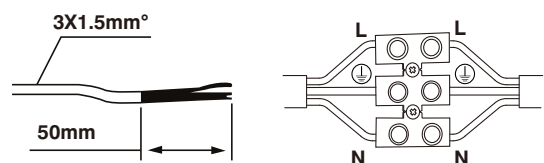
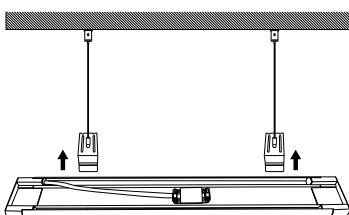
Step3: Drill holes in the ceiling and screw in the mounting sockets.



Step4: Screw the nuts into the mounting sockets.



Step5: Clip the slim LED batten onto the clips



Applications:

- Warehouses
- Supermarkets
- Shopping Malls
- Office Buildings
- Workshops
- Car Parks