

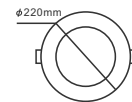
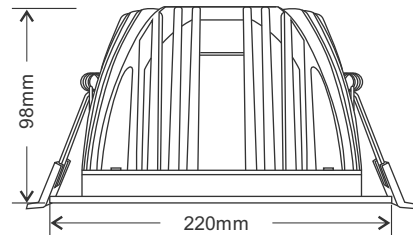
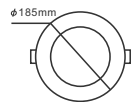
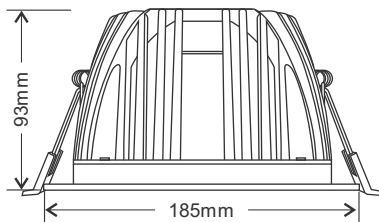
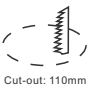
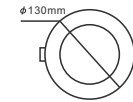
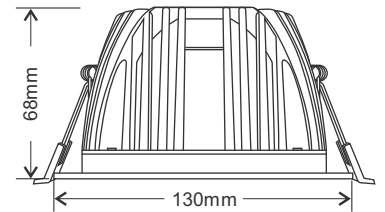
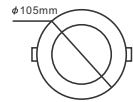
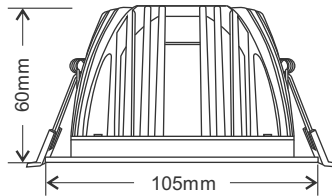
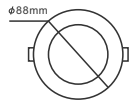
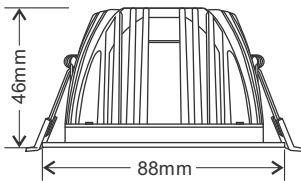
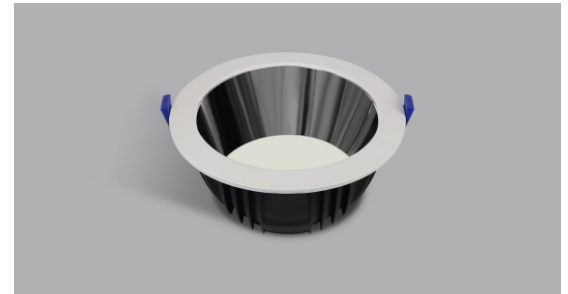
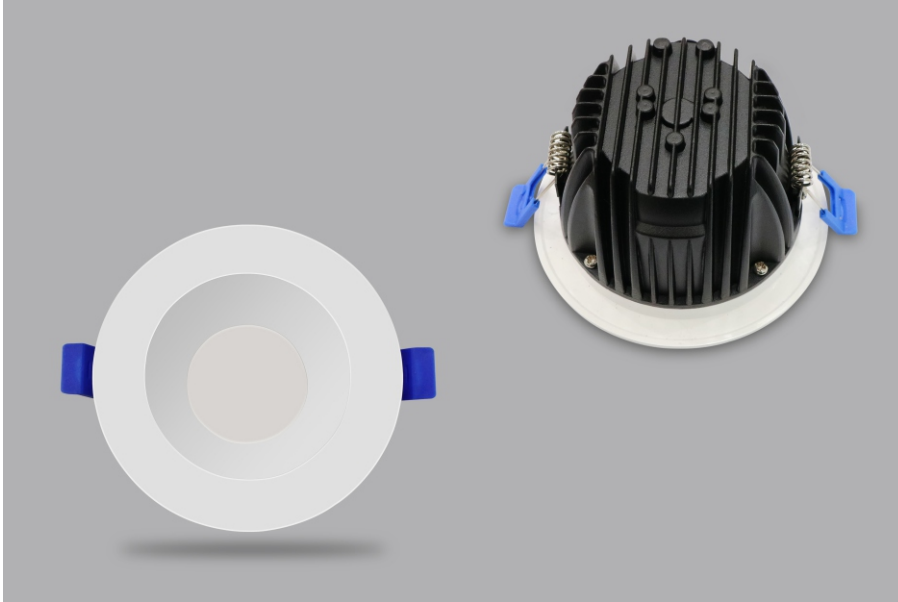


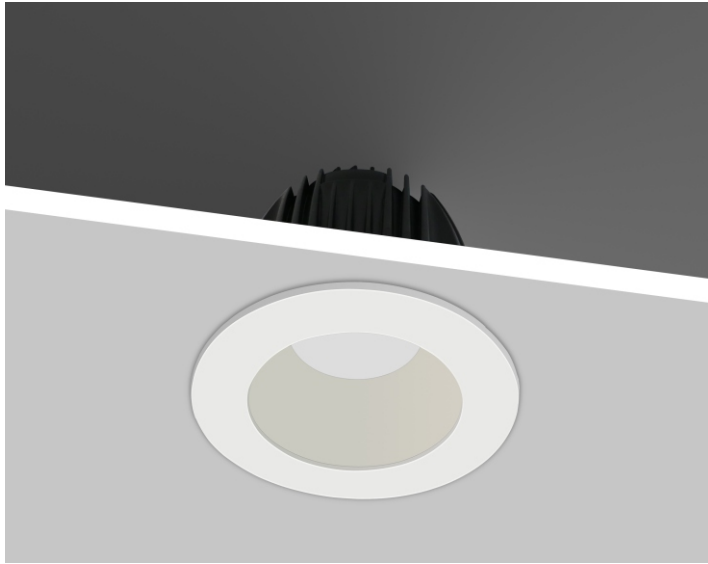
A-UNIQUE

ASIA UNIQUE LED LIGHTING CO., LTD

AU26 Low Glare LED Downlight

AU26-DL Series





General Features:

- Low Glare downlight with super soft light
- Flicker free dimming led driver, 90Ra led chip and 3-CCT are available if required.
- Matt white trim, Grey heat-sink
- Matt white / Glossy black reflector
- IP44 rated for the front, ideal for corridors, bathrooms, dining rooms and bedroom, etc.
- 2.5inch/3.5inch/4inch/6inch/8inch available
- SAA, C-tick, CE and RoHS approved
- 3 years warranty

Technical Specifications

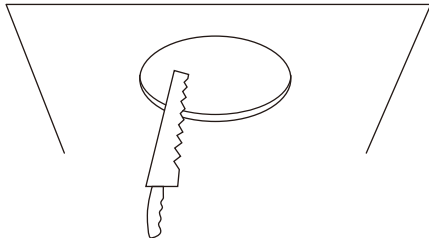
Model No.	AU26-DL7WXX	AU26-DL12WXX	AU26-DL15WXX	AU26-DL20WXX-6	AU26-DL30WXX-8	AU26-DL35WXX-8
Dimension(mm)	Ø88*H46	Ø105*H60	Ø130*H68	Ø185*H93	Ø220*H98	Ø220*H98
Cutout(mm)	75	90	110	165	195	195
Wattage(w)	7W	12W	15W	20W	30W	35W
Input Voltage(v)	AC220~240V					
Light Source	SMD2835					
SDCM	<6					
CCT(K)	1 CCT	2700K/3000K/4000K/5000K//6000K/6500K				
	3 CCT	2700K-4000K-6500K or 3000K-4000K-6000K				
Luminous Flux (lm)±5%	450-500	912-1032	1140-1290	1600-1800	2400-2700	2800-3150
CRI	>80Ra or >90Ra optional					
Beam Angle(°)	75°					
Dimming option	Yes, Triac Dimming (Flicker Free if required)					
Fire Rated	Available, if required					
Protection Class	Class III					
Degree of protection(IP)	IP20 for the whole luminaire, IP44 for the front portion of the lamp					
Material	Trim	Aluminum				
	Heat-sink	Aluminum				
	Diffuser	PMMA				
Color	Trim	White				
	Reflector	Matt white / Glossy black				
L70	54000hrs					
Operation Temp.(°C)	-20~ 45°C					
Installation	Recessed					
Certificates	CE, Rohs, SAA & C-tick					
Warranty	3 Years					

Packing information

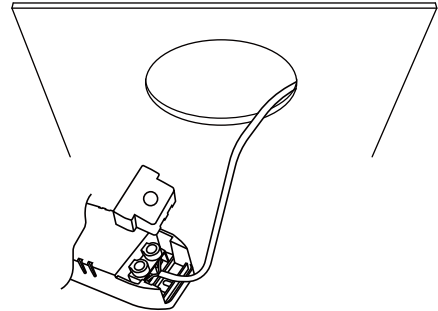
Model Number	Weight/Luminaire (kg)	QTY/BOX (pcs)	Inner Box Size (mm)	Weight/Box (kg)	QTY/CTN (pcs)	Carton Size (cm)	Weight/CTN (kg)	QTY/20GP (PCS)	QTY/40GP (PCS)	QTY/40HQ (PCS)
AU26-DL7WXX	0.35	1	115*115*105	0.40	36	48*36*33.5	15.2	15336	30672	34704
AU26-DL12WXX	0.40	1	115*115*105	0.45	36	48*36*33.5	17.2	15336	30672	34704
AU26-DL15WXX	0.60	1	135*135*80	0.65	27	43.5*43.5*27	17.5	13500	25920	30115
AU26-DL20WXX-6	0.73	1	190*190*105	0.90	16	44*39.5*40	15.0	5920	11360	13200
AU26-DL30WXX-8	1.05	1	230*230*115	1.26	16	47.5*47.5*48	21.0	3760	7264	8400
AU26-DL35WXX-8	1.05	1	230*230*115	1.26	16	47.5*47.5*48	21.0	3760	7264	8400

Installation Instructions

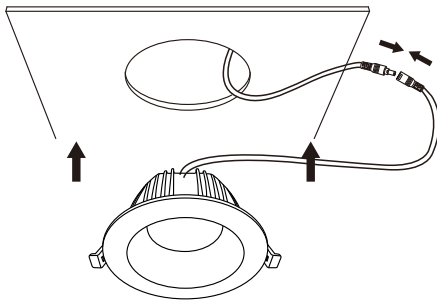
1. Open a hole on the ceiling according to the cutout size of led downlight



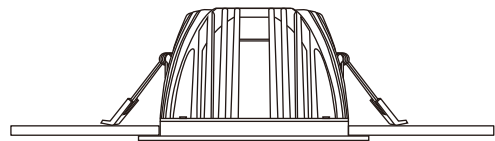
2. Use screwdriver to open the driver terminal cover, feed the main AC wire L. N. in terminal block respectively, then fix the cover back.



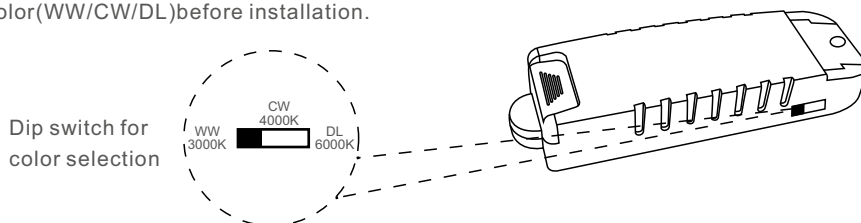
3. Connect the downlight with driver, hold back the spring clip then push the downlight into the hole.



4. Make sure the downlight fixed tightly in ceiling, turn on the power.



* For the product with 3-color Selection, please select the light color(WW/CW/DL)before installation.



Please Note:

- * Turn off and isolate the electrical supply before connecting this fitting to the building wires.
- * Must be installed, or connected by licenced electrician.
- *The Luminaires are intended for indoor use only.

Applications:

- Hospitality applications
- Residential applications
- Office Buildings
- Hotels
- Shopping Malls
- Supermarkets