

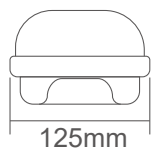
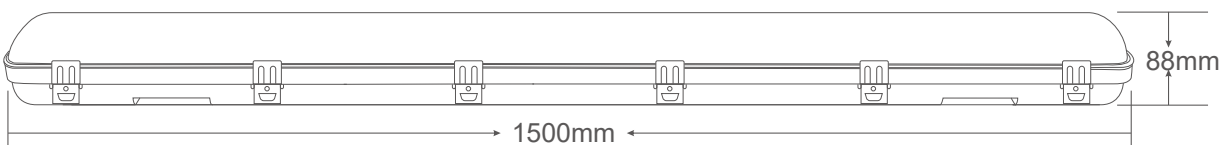
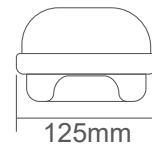
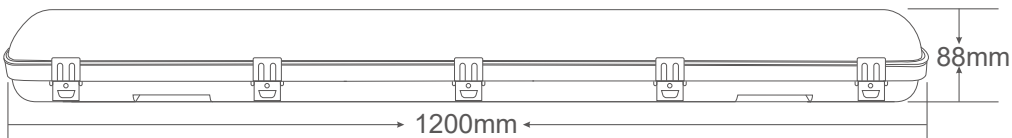
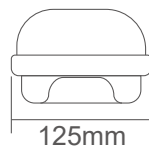
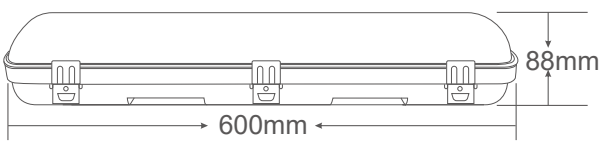
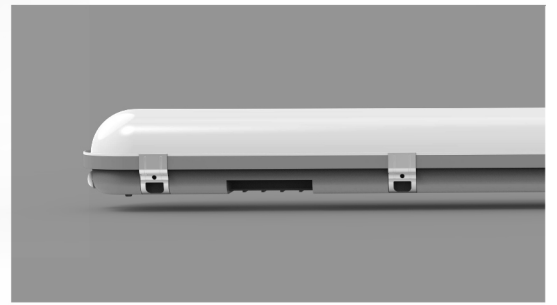
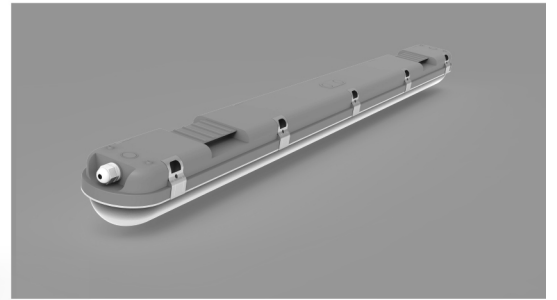
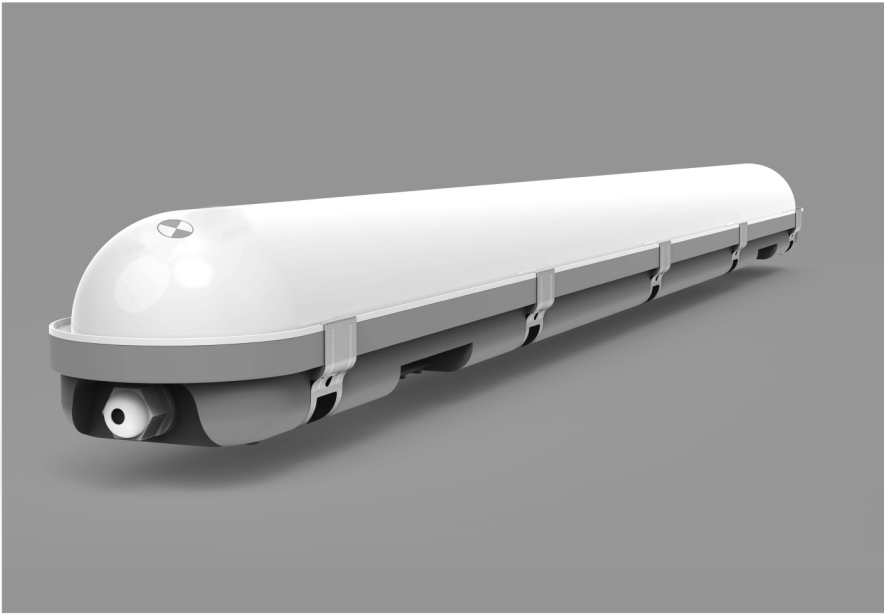


A-UNIQUE

ASIA UNIQUE LED LIGHTING CO., LTD

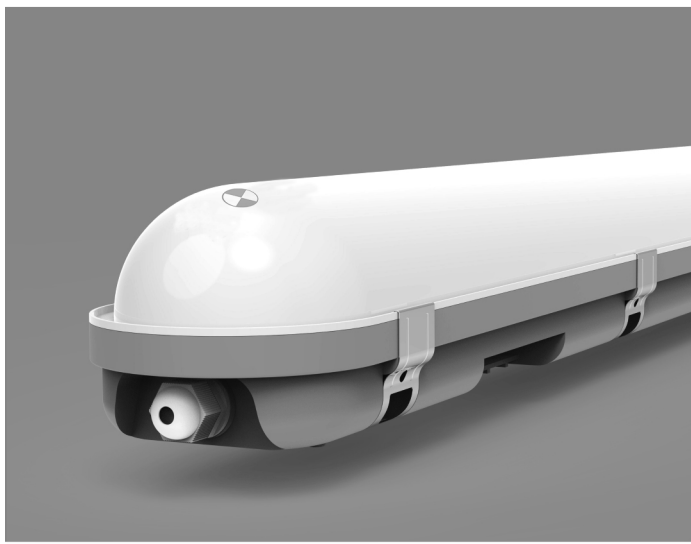
STORM-AU02 Led Tri-Proof Light-Emergency

AU02-TRIP Series



General Features:

- IP65 - Waterproof, Dustproof, Moisture-proof
- High lumen efficiency 120lm/w
- Full PCB board and the diffuser is a whole part, no need to take the PCB apart but wire directly, much easier than the normal design
- Cables can be from the back or the two ends of the light, easy wiring
- Easy end clips, one step assembly
- With Safety cables, free your hands during the installation
- Can be Surface Mounted or Suspended
- Can be linked one to another
- CE, RoHS, SAA & C-tick approved
- **LiFePO4 Battery adopted, 3.5W run 3 hours**
- **Emergency Lumen 450LM ±5%**
- 3 years warranty for whole lamp
- Single CCT & Tri-color available



Technical Specifications

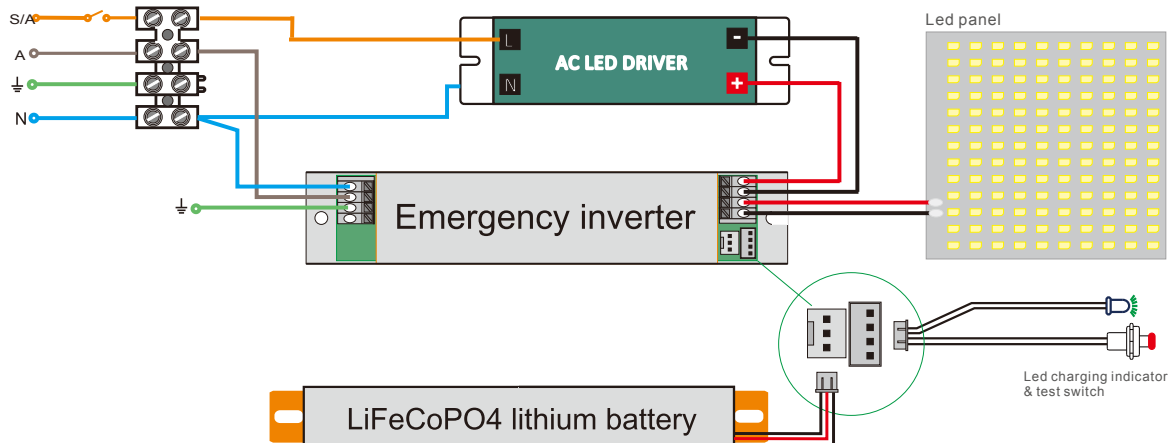
Model No.	AU02-TRIP18W2F-ME3.5W		AU02-TRIP36W4F-ME3.5W		AU02-TRIP50W5F-ME3.5W	
Dimension(mm)	600*125*88		1200*125*88		1500*125*88	
Wattage(w)	Running Ordinary	18W	36W		50W	
	Emergency Mode	3.5W run 3 hours 450LM ±5%	3.5W run 3hours 450LM ±5%		3.5W run 3 hours 450LM ±5%	
Input Voltage(v)	AC200~240V					
Light Source	SMD2835					
SDCM	<6					
Single CCT :	2700K/3000K/4000K/5000K/5700K/6500K					
3CCT	3000K-4000K-5000K or 3000K-4000K-5700K or 4000K-5000K-5700K					
CRI	>80					
Lumen (lm)±5%	2052-2268		4104-4536		5700-6300	
Beam Angle(°)	120°					
Dimming option	Available					
Sensor option	Available					
Emergency Kits	Maintained Emergency					
Protection Class	Class I					
Degree of protection(IP)	IP65					
Impact Resistance(IK)	IK08					
Material	Brackets	Stainless steel				
	Heatsink	PC				
	Diffuser	PC				
L70	>54000Hrs					
Glow Wire Test(°C)	650°C					
Operation Temp.(°C)	-20~ 45°C					
Installation	Surface Mounted / Suspended					
Certificates	CE, Rohs, SAA & C-tick					
Warranty	3 Years					

Packing information

Model Number	Weight/ Luminaire kg)	QTY/BOX (pcs)	Inner Box Size (mm)	Weight/Box (kg)	QTY/CTN (pcs)	Carton Size (cm)	Weight/CTN (kg)	QTY/20GP (PCS)	QTY/40GP (PCS)	QTY/40HP (PCS)
AU02-TRIP18W2F-ME3.5W	1.40	1	660*100*90	1.60	6	68*28*31	10.6	3144	6528	7386
AU02-TRIP36W4F-ME3.5W	2.20	1	1260*100*90	2.50	6	128*28*31	16.5	1536	3234	3792
AU02-TRIP50W5F-ME3.5W	2.50	1	1560*100*90	2.90	6	158*28*31	18.7	1260	2622	2976

Before installation, please read the instructions completely and carefully.

Wiring Diagram



Testing

When luminaire is permanently connected to mains supply, allow the luminaire to fully charge for 16 hours.
Conduct following tests once the battery has fully charged:

Test 1:

A commissioning discharge test must be carried out once the luminaire is connected to mains supply.

The emergency luminaire must remain illuminated for at least 2 hours after disconnection from the mains power.

NOTE: The luminaire works on standard power when connected to mains supply and switches to 3.5W power during emergency mode operation.

Test 2:

Subsequent tests, performed every 6 months, require the luminaire to successfully operate in emergency mode for 90mins.

NOTE: A record shall be maintained of all the discharge tests performed on site at all times.

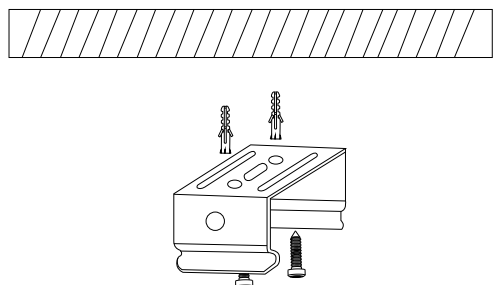
Test Switch and LED Indicator:

The Test Switch and LED indicator on the luminaire provide an indication of the status of the luminaire during testing and normal operation

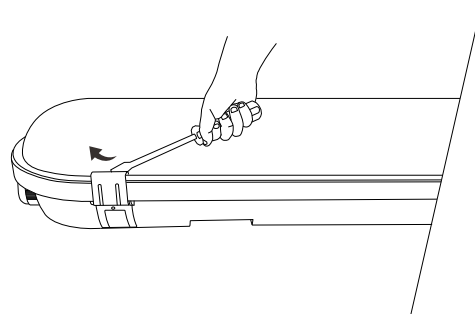
Test Switch&LED indicator	ON	OFF
	<ul style="list-style-type: none"> • Depress the test switch-luminaire will operate in Emergency mode • LED indicator will be off during Emergency mode 	<ul style="list-style-type: none"> • On releasing the Test switch the luminaire will automatically connect to mains supply • LED indicator will illuminate
	<ul style="list-style-type: none"> • Luminaire is working on mains supply 	<ul style="list-style-type: none"> • Luminaire is working in Emergency mode • Luminaire has malfunctioned

Installation Instructions

1. Drill holes and insert plastic dowel into the holes, fix the mounting bracket with provided screws.



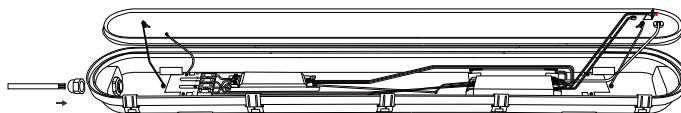
2. Open the clips with screw driver



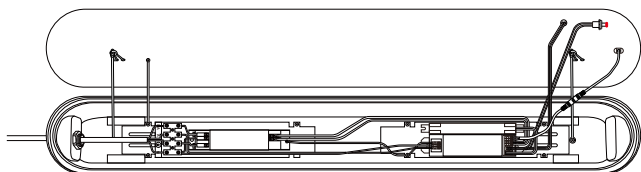
3. Remove the cover from the housing base



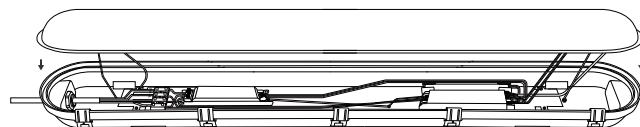
4. Loosen the cable gland and insert the power cable through the cable gland.



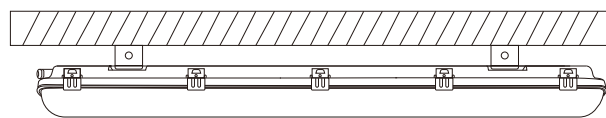
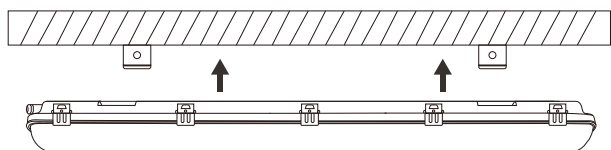
5. Connect the power cable to the driver and tighten the cable gland.



6. Reattach the cover and fasten the clip



7. Mount the fixture on the ceiling / wall



Please Note:

- *Product must be installed by licensed electrician.
- *Disconnect or turn off the power before installation.
- *Verify the supply Voltage is the same as rated luminaire voltage.

Packing List (each inner box)

Tri-proof light	1pcs
Screw	6pcs
Brackets	2pcs
Connector	1pcs
Clip used to hold the wires	1pcs

Applications:

- Parking lots
- Warehouses
- Factories
- Tunnels
- basements
- Lofts
- Balconies
- Car washing stations

Installation caution

- Product must be installed by licensed electrician.
- Disconnect or turn off the power before installation.
- Verify the supply Voltage is the same as rated luminaire voltage.

Application:

