

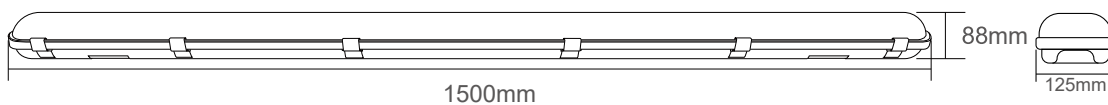
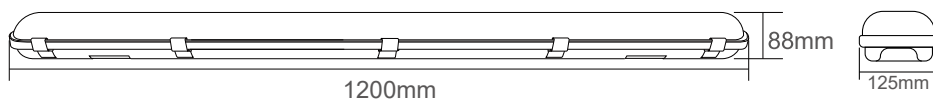
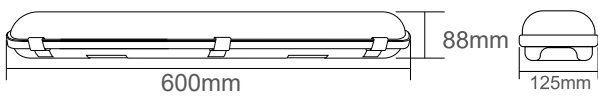
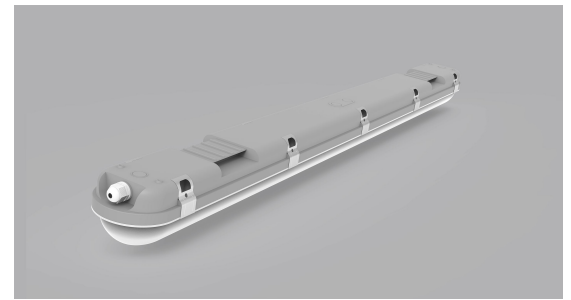


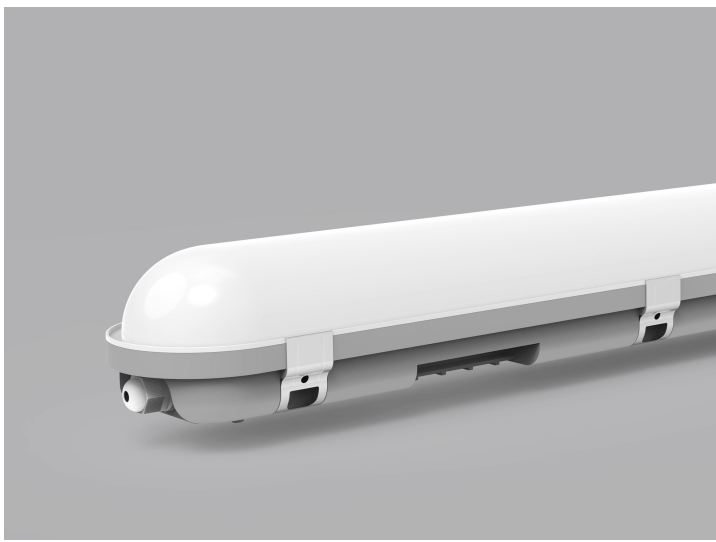
A-UNIQUE

ASIA UNIQUE LED LIGHTING CO., LTD

STORM AU02 LED Tri-Proof Light

AU02-Tri-Proof Series





General Features:

- IP65 - Waterproof, Dustproof, Moisture-proof
- High lumen Efficiency-125LM/W
- Full PCB board and the diffuser is a whole part, no need to take the PCB apart but wire directly, much easier than the normal design
- Cables can be from the back or the two ends of the light, easy wiring
- Easy end clips, one step assembly
- With Safety cables, free your hands during the installation
- Can be Surface Mounted or Suspended
- Can be linked one to another
- CE, RoHS, SAA & C-tick approved
- Sensor & Emergency versions available
- Triac Dimming, 1-10V Dimming & Dali Dimming available

Technical Specifications

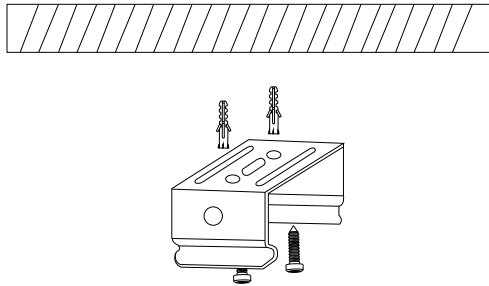
Model No.	AU02-TRIP10W2F	AU02-TRIP20W2F	AU02-TRIP25W4F	AU02-TRIP40W4F	AU02-TRIP50W5F	AU02-TRIP60W5F
Dimension(mm)	600*125*88	600*125*88	1200*125*88	1200*125*88	1500*125*88	1500*125*88
Cutout(mm)	/	/	/	/	/	/
Wattage(w)	10W	20W	25W	40W	50W	60W
Input Voltage(v)	AC200~240V					
Light Source	SMD2835					
SDCM	<6					
Single CCT(K)	2700K/3000K/4000K/5000K/5700K/6500K					
3 CCT(K)	3000K-4000K-5000K or 3000K-4000K-5700K or 4000K-5000K-5700K					
Lumen (lm)±5%	1187-1312	2375-2625	2968-3281	4750-5250	5937-6562	7125-7875
CRI	>80					
Beam Angle(°)	120°					
Dimming option	Triac Dimming, 1-10V Dimming & Dali Dimming available					
Sensor option	Available					
Emergency Kits	Available					
Protection Class	Class I					
Degree of protection(IP)	IP65					
Impact Resistance(IK)	IK08					
Material	Brackets	Stainless steel				
	Heatsink	PC				
	Diffuser	PC				
L70	>54000Hrs					
Glow Wire Test(°C)	650 °C					
Operation Temp.(°C)	-20~ 45 °C					
Installation	Surface Mounted / Suspended					
Certificates	CE, Rohs, SAA & C-tick					
Warranty	3Years					

Packing information

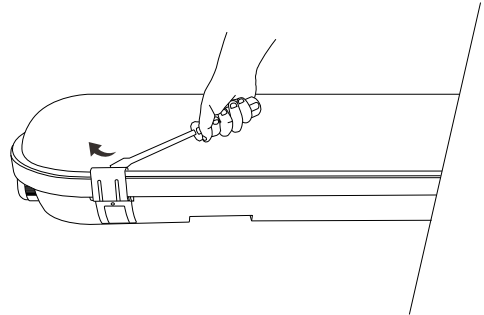
Model Number	Weight/Luminaire (kg)	QTY/BOX (pcs)	Inner Box Size (mm)	Weight/Box (kg)	QTY/CTN (pcs)	Carton Size (cm)	Weight/CTN (kg)	QTY/20GP (PCS)	QTY/40GP (PCS)	QTY/40HP (PCS)
AU02-TRIP10W2F	1.30	1	660*130*90	1.40	6	68*28*31	9.0	3144	6528	7386
AU02-TRIP20W2F	1.30	1	660*130*90	1.40	6	68*28*31	9.0	3144	6528	7386
AU02-TRIP25W4F	2.00	1	1260*130*90	2.30	6	128*28*31	15.0	1536	3234	3792
AU02-TRIP40W4F	2.00	1	1260*130*90	2.30	6	128*28*31	15.0	1536	3234	3792
AU02-TRIP50W5F	2.30	1	1560*130*90	2.70	6	158*28*31	17.2	1260	2622	2976
AU02-TRIP60W5F	2.30	1	1560*130*90	2.70	6	158*28*31	17.2	1260	2622	2976

Installation Instructions

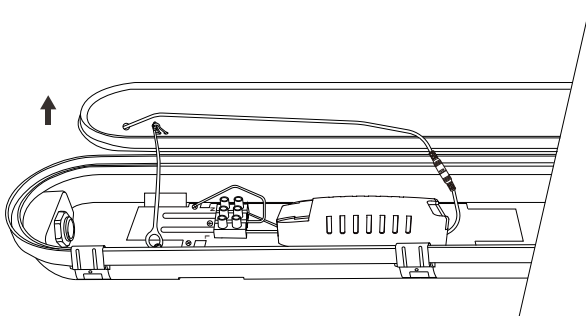
1. Drill holes and insert plast dowel into the holes, fix the mounting bracket with provided screws.



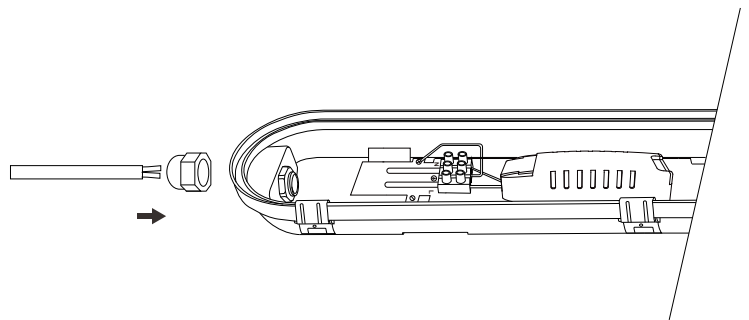
2. Open the clips with screw driver



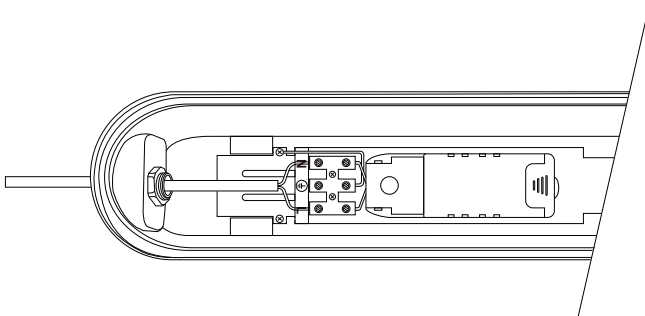
3. Remove the cover from the housing base



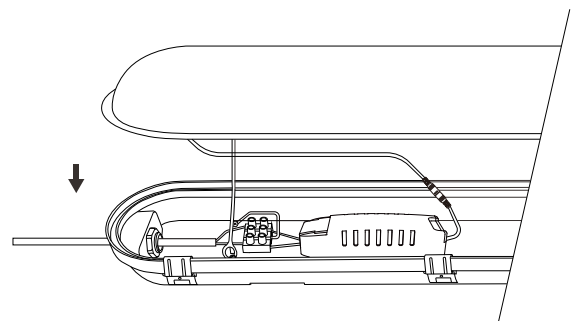
4. Loosen the cable gland and insert the power cable through the cable gland.



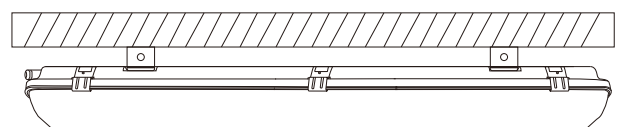
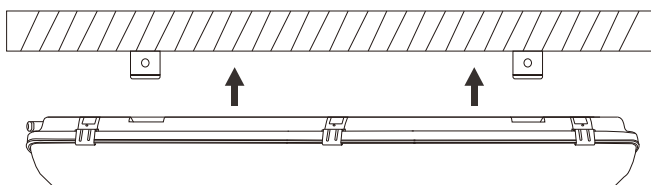
5. Connect the power cable to the driver and tighten the cable gland.



6. Reattach the cover and fasten the clips



7. Mount the fixture on the ceiling / wall



Please Note:

- *Product must be installed by licensed electrician.
- *Disconnect or turn off the power before installation.
- *Verify the supply Voltage is the same as rated luminaire voltage.

Packing List (each inner box)

Tri-proof light	1pcs
Screw	6pcs
Brackets	2pcs
Connector	1pcs
Clip used to hold the wires	1pcs

Applications:

- Parking lots
- Warehouses
- Factories
- Tunnels
- basements
- Lofts
- Balconies
- Car washing stations

Installation caution

- Product must be installed by licensed electrician.
- Disconnect or turn off the power before installation.
- Verify the supply Voltage is the same as rated luminaire voltage.

Application:

